



BELLINGHAM SAFARIS
WORLDWIDE WILDLIFE EXPERIENCES



PHOTO CREDIT: MOUNTAIN GORILLA BABY BY JIM JAMES

SAMPLE TRAVEL ITINERARY

VOLCANS & NYUNGWE NATIONAL PARKS

RWANDA



TOUR AT A GLANCE

| Day | Location | Accommodation |
|-----|-----------------------|-----------------------------------|
| 01 | Kigali | Serena Hotel - Prime Room (BB) |
| 02 | Volcans National Park | Bisate Lodge - Forest Villa (FI) |
| 03 | Volcans National Park | Bisate Lodge - Forest Villa (FI) |
| 04 | Nyungwe National Park | Nyungwe House - Nyungwe Room (FI) |
| 05 | Nyungwe National Park | Nyungwe House - Nyungwe Room (FI) |
| 06 | Kigali | Serena Hotel - Prime Room (BB) |
| 07 | Day of departure | |

FB = full board (3 meals per day) BB = bed and breakfast DBB = dinner, bed and breakfast
 FI = fully inclusive (all meals, snacks and standard beverages)



PHOTO CREDIT: GORILLA TREKKING IN VOLCANS NATIONAL PARK BY TREVOR SAVAGE

LOCATION: KIGALI

2 NIGHTS

Kigali is Rwanda's capital and largest city. It is situated near the geographic centre of the country, and has been the economic, cultural, and transport hub of Rwanda since independence in 1962. Ravaged by terrible genocide, Rwanda, the "land of a thousand hills" has lifted itself out of the doldrums and is now world renowned as one of the best places on earth to view the critically endangered Mountain Gorilla. The Kigali Genocide Memorial provides an excellent insight into the tragic events of the 1994 Genocide, during which around a million people were slaughtered in 100 days of brutal violence. Travelling through the streets of Kigali one quickly notices that they are absolutely spotless, and this bears testament to the resilience of its people and sustained efforts to "clean up its act".



PHOTO CREDIT: RWANDAN DANCERS BY SIMON BELLINGHAM, GENOCIDE MUSEUM

ACCOMMODATION: SERENA HOTEL

2 NIGHTS



On an enchanting boulevard in the heart of Kigali, just a five-minute walk from the CBD, lies the Serena Hotel, complete with a distinctively rich blend of Rwandan heritage, art and culture with contemporary 5-star comfort. This private and peaceful retreat comprises of 148 rooms — each with an en suite bathroom, internet connectivity, flat-screen satellite television and minibar. Globally-inspired meals are served at the hotel's eateries. Cocktails and lunches are served overlooking the impressive pool and tranquil gardens. Guests can take a dip in the sparkling swimming pool or unwind with a soothing massage at the hotel's health club. A fully-equipped gym is also on site.

Rates include: Accommodation and breakfast

1 x Prime Room

www.serenahotels.com/serenakigali

LOCATION: VOLCANS NATIONAL PARK

2 NIGHTS

Volcans National Park in Rwanda, home to six Virunga Volcanoes, is a haven for close encounters with Mountain Gorilla. This park became the base for the American naturalist Dian Fossey to carry out her research into the Gorillas. In 1967 she set up the Karisoke Research Centre between Karisimbi and Visoke, where she spent most of her time in the park, and is widely credited with saving the gorillas from extinction by bringing their plight to the attention of the international community. The large Virunga race may be tracked here. Interestingly, taxonomists now separate the Gorillas found here from the Gorillas at Bwindi in Uganda. Rwanda's Gorillas are generally easier to find and observe in their mostly open bamboo habitat which allows for superb photographic opportunities! Mountain Gorillas are the largest of all primates with "silverbacks" (mature males) sometimes weighing in excess of 200 kg. An encounter with these gentle giants is, without a doubt, one of the most exciting and emotional wildlife experiences on Earth. In order not to disturb these magnificent beasts and not to expose them to infection (a common cold could be fatal) you will need to stick to the parameters designed by conservationists. The beautiful and endangered Golden Monkey may also be encountered while exploring the large stands of bamboo that grace these verdant mountains, since most of their diet consists of young bamboo leaves. The park also holds a rich avifauna which includes 17 of the 25 species of the Albertine Rift endemics.



PHOTO CREDIT: MOUNTAIN GORILLA BY SIMON BELLINGHAM, GOLDEN MONKEYS BY DANA ALLEN

ACCOMMODATION: BISATE LODGE

2 NIGHTS



Bisate Lodge is located in the natural amphitheatre of an eroded volcanic cone – the word bisate means 'pieces' in Kinyarwanda, describing how the cone was once whole but worn away by natural erosion. The area has dramatic views of the peaks of the volcanoes Bisoke and Karisimbi rearing up through the Afro-alpine forests of nearby Volcanoes National Park. Twelve guests will stay in six sumptuous en-suite rooms that maximise comfort, warmth and views while retaining environmental principles and reflecting the culture of surrounding rural Rwanda. Aside from tracking one of the ten habituated Gorilla groups, other attractions include Iby'wacu cultural village, the Twin Lakes of Buhondo and Burera, the lava tunnels of the Musanze Caves, Dian Fossey's grave, and even seeing the endemic golden monkey. Walks on the extensive property offer birding and participation in the reforestation programme.

Rates include: Accommodation, all meals, all local drinks (excludes premium imported brands and champagne), laundry, complimentary in-room welcome massage, "Gym in a bag" concept per guest, wireless internet connection in room only, local government taxes, and lodge activities on property.

1 x Forest Villa

www.wilderness-safaris.com/camps/bisate-lodge

LOCATION: NYUNGWE NATIONAL PARK

2 NIGHTS

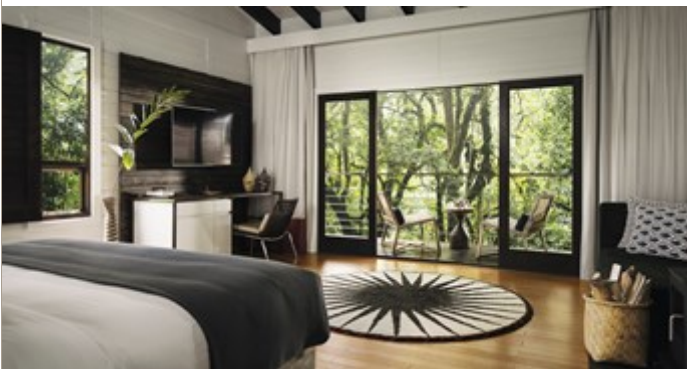
Nyungwe National Park is set in the south-west of the country in the majestic hills near the border with Burundi and the Democratic Republic of the Congo. The park protects the largest block of montane forest in East or Central Africa, and in addition, it is one of the most ancient forests on the continent, dating back to before the last Ice Age! In the heart of the forest, giant Tree Ferns, and tall old Mahogany and Ebony trees tower above. A uniquely rich centre of biodiversity, Nyungwe is most alluring for its primates and high concentration of birds endemic to the montane forests on the Albertine Rift. A staggering thirteen species of primates occur, including the handsome L'Hoest's Monkey and the delightfully acrobatic Angola Colobus, while the 300 bird species that have been listed here make it one of the most rewarding birding sites in the country. Our closest living relative, the Chimpanzee, is undoubtedly the star of the show! They are noisy and often heard before being seen with their thrilling whoops, shrieks and grunts. As much of their diurnal time is spent feeding, an encounter is likely to involve observing them gorging on fruit, especially figs, all the while engaging in the subtleties of Chimp etiquette.



PHOTO CREDIT: YOUNG CHIMPANZEE BY MARIO HABERFELD, ANGOLA COLUBUS MONKEY BY NYUNGWE O&O

ACCOMMODATION: NYUNGWE HOUSE

2 NIGHTS



In south-west Rwanda, just south of Lake Kivu on the Burundi border, One&Only Nyungwe House is set amongst the tranquil tea-plantations of Gisakura, on the edge of the iconic Nyungwe National Park. Nyungwe House is the One&Only's first nature lodge (they are better known for their beach hotels) but they could not have picked a better location. Over breakfast you can see the tea pickers harvesting their daily crop, moving slowly through waist high plants with traditional baskets on their back. The spacious central areas have vast sweeping views with floor-to-ceiling windows and cosy firesides. The rooms have forest views from the private decks. After trekking for Chimpanzees and other primates a lavish afternoon tea served by an open fire awaits.

Rates include: Accommodation, all meals, minibar, non-alcoholic beverages, alcoholic house beverages with meals and two activities per day.

1 x Nyungwe Room

www.oneandonlyresorts.com/one-and-only-nyungwe-house-rwanda

DAILY DETAIL

Day 1

Kigali

On arrival at Kigali International Airport you will be met by our representative and transfer to the Serena Hotel for your overnight stay.



Transfer: Kigali International Airport to Serena Hotel



Overnight: Serena Hotel

Day 2

Volcans National Park

This morning after breakfast you will transfer by road to the Volcans National Park, where you will have the afternoon to relax and enjoy your surroundings before your Gorilla trek the next day.



Transfer: Serena Hotel to Volcans National Park (approx. 3 hours)



Overnight: Wilderness Bisate Lodge

Day 3

Volcans National Park

Early this morning you will be collected in time for your Gorilla trekking adventure. The afternoon may be spent either relaxing or enjoying the many other activities offered at the lodge.



Overnight: Wilderness Bisate Lodge

Day 4

Nyungwe National Park

This morning you will enjoy another Gorilla trekking experience before catching your helicopter flight from Musanze to Nyungwe.



Volcans National Park to Nyungwe Forest



Overnight: Nyungwe House

Day 5

Nyungwe National Park

This morning you will enjoy a Chimpanzee trek. Your afternoon will be at leisure to enjoy the other activities that the camp has on offer.



Overnight: Nyungwe House

Day 6

Kigali

Today you fly back to Kigali International Airport, where you will be met for a city tour and a visit to the Genocide Museum before being taken back to the Serena Hotel for your overnight stay.



Flight: Nyungwe to Kigali International Airport



Transfer: Kigali International Airport to Serena Hotel



Overnight: Serena Hotel

Day 7

Day of Departure

Today you will transfer back to the airport in time for your international flight home - leaving with unforgettable memories of this amazing wildlife adventure.



Transfer: Serena Hotel to Kigali International Airport

BELLINGHAM SAFARIS

WORLDWIDE WILDLIFE EXPERIENCES

42 Lighthouse Road, Kommetjie, Cape Town, 7975, South Africa
Tel: +27-(0)21-783-4380 (GMT +2hrs)

www.bellinghamsafaris.com

